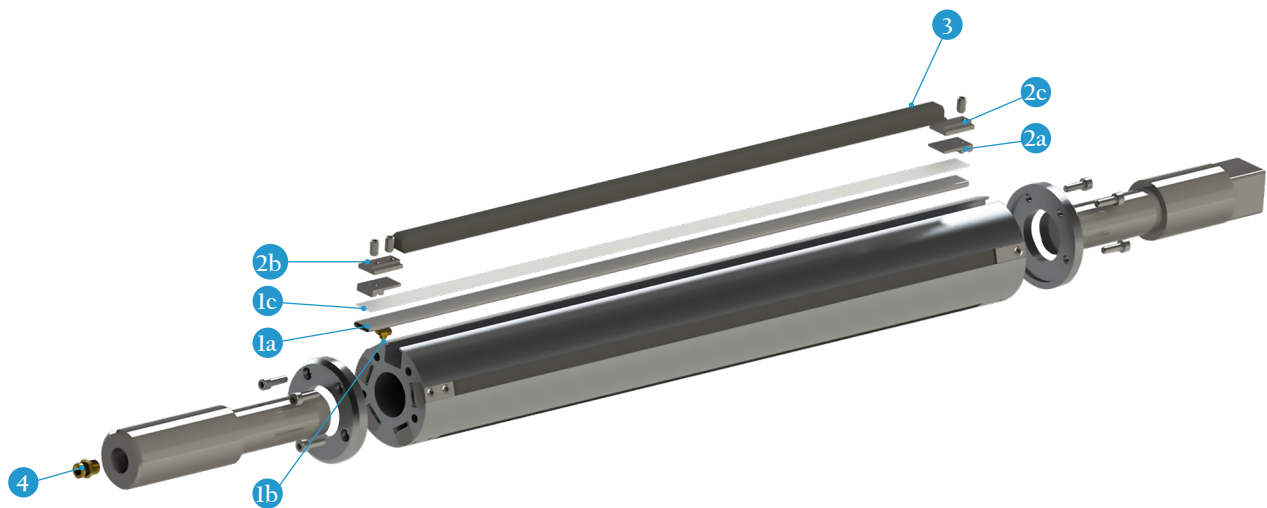




PNEUMATIC EXPANDING SHAFT SPARE PARTS AND ACCESSORIES



POSITION	DESCRIPTION	PAGE	UNIT
1a	Air chamber	Pag. 3	KIT / METER
1b	Air chamber connection	Pag. 4	KIT / UNITARY
1c	Protective Polyester	Pag. 3	KIT / METER
2a	Bottom Clamping Piece	Pag. 2	KIT
2b	Upper Clamping Piece 1 hold	Pag. 2	KIT
2c	Upper Clamping Piece 2 hold	Pag. 2	KIT
3	Expansor	Pag. 2	UNITARY / METER
4	Valve	Pag. 4	UNITARY





EXPANDING STRIPS

The expanding shafts perform very good torque transmission and are specifically designed to function as drive shafts for roll rewinding and unwinding in packaging applications. To ensure an optimal fit for your requirements, we have developed superior solutions and carefully selected high-quality materials for the expanding strips.

MATERIALS

RUBBER

The most commonly used expanders in expandable shafts, it provides an excellent grip for both cardboard and steel mandrels

ALUMINIUM

This expander has a long durability and does not deform over its lifespan, with a slightly lower coefficient of friction than the rubber still provides excellent grip for both cardboard and steel mandrels

ALUMINIUM TOOTHED SHAPED

This expander has a long durability and does not deform over its lifespan, the serrated finish provides extra grip on cardboard mandrels

TYPE

LINEAR

The linear expansion strip is a single-piece component that extends across the entire shaft slot or channel

SECTIONED

The sectioned expanding strip is installed as individual pieces in each shaft slot. This system enables the correction of imperfections in the inner core of the coil by addressing them separately

EXPANSION RANGE

Ø4

This is our standard solution, offering an expanding range of 4mm from the body shaft. It provides reliable performance and versatility

Ø9

Carefully designed to achieve the best adaptability for different core diameters and maximize grip on the coil, this solution offers an expanding range of 9mm from the body shaft

In addition to our standard solutions, we offer the capability to manufacture custom-made solutions tailored to your specific needs. This includes options such as stainless steel (inox) strips, different expansion ranges, and customized drawing shapes.



info@ejematic.com

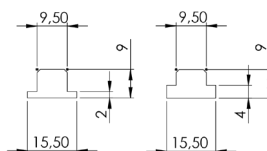
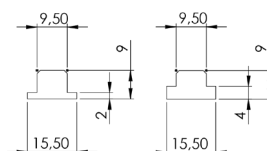
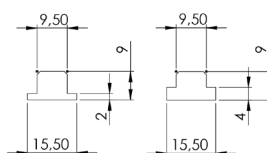


www.ejematic.com



EXPANDING STRIPS

MATERIAL	TYPE	EXPANSION RANGE	REFERENCE
Rubber	Linear	Ø4	PAR-LRU-004
	Linear	Ø9	PAR-LRU-009
Aluminium	Linear	Ø4	PAR-LAL-004
	Linear	Ø9	PAR-LAL-009
	Sectioned	Ø4	PAR-SAL-004
	Sectioned	Ø9	PAR-SAL-009
Aluminium Toothed shape	Linear	Ø4	PAR-LAT-004
	Linear	Ø9	PAR-LAT-009
	Sectioned	Ø4	PAR-SAT-004
	Sectioned	Ø9	PAR-SAT-009



COMPATIBILITY WITH OTHER EJEMATIC SOLUTIONS

All of our spare parts and accessories guarantees seamless compatibility across the complete range of standard airshafts and machine anchoring systems proudly offered by EJEMATIC:

Airshaft type	Double Support	Cantilever	Axial Displacement
Body Diameter	Ø69, Ø75, Ø150, Special	Ø69, Ø75, Ø150, Special	Ø69, Ø75, Ø150, Special
Machine anchor type	Flange & Foot Safety Chucks and Rolling Supports	Flange & Foot Bushings Ø35 and Ø45	



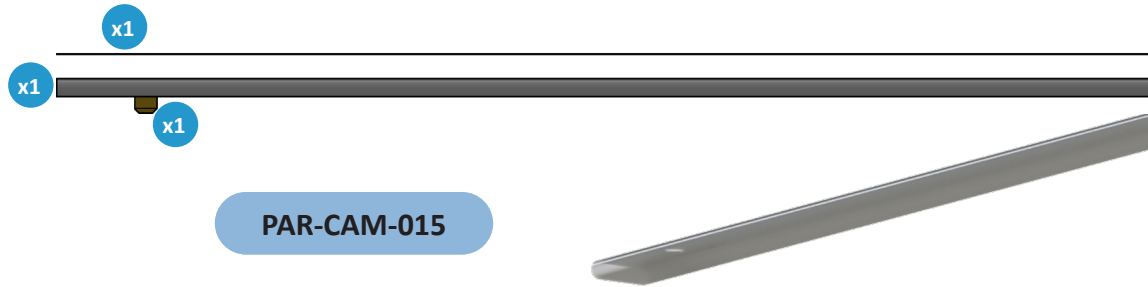
info@ejematic.com



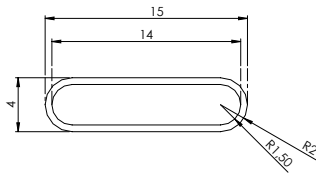
www.ejematic.com



AIR CHAMBER



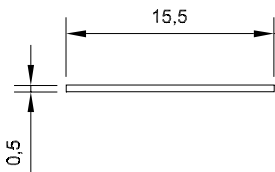
PAR-CAM-015



The cameras are made of polyurethane and have excellent durability and abrasive-resistance, allowing inflation and deflation cycles for many years. Our PEHD cameras are available in rolls (by meter) including its protective polyester or in units/strips tailor-made for your air shaft, including the air connection assembly

PAR-POL-015

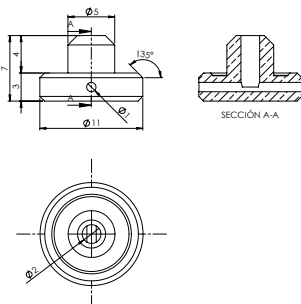
PLYESTER AIR CHAMBER PROTECTOR



Polyester is a protective foil used to prevent damage of the camera from the sealing components

AIR CHAMBER CONNECTION

PAR-ACN-001



The airflow from the exterior to the cameras during inflation and deflation is achieved through the connections, which are brass fittings that allow sealing the chambers with the inflation valve

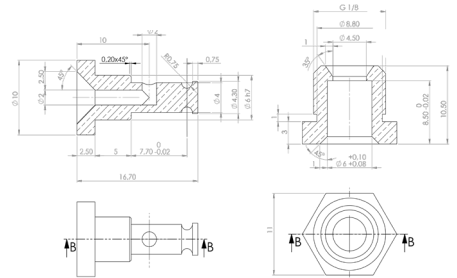




PAR-VAL-G18

1/8G VALVE

A high-reliability inflation and deflation valve made of brass. The 1/8G thread makes it the most commonly used ones

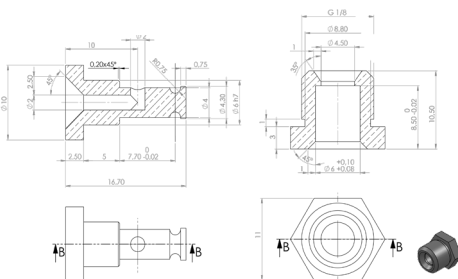


M8 VALVE

PAR-VAL-M18



A high-reliability inflation and deflation valve made of brass. The M8 thread allows installation in small spaces



VALVE ROTAR 1/8G

PAR-RVA-G18



A high-reliability inflation and deflation valve made of steel. For applications where continuous feeding of the expandable shaft is required while it is working



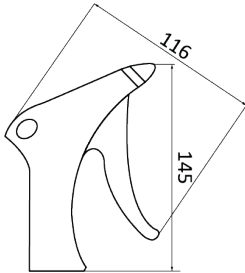


ACCESSORIES



ACC-P01

INFLATOR GUN WITHOUT PRESSURE GAUGE



Inflation gun without a pressure gauge with an ergonomic tip that fits inflation valves



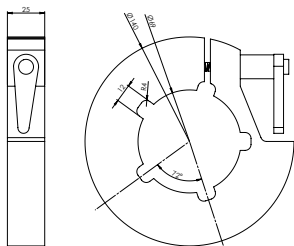
info@ejematic.com



www.ejematic.com



COIL STOPPER FOR AIRSHAFT Ø69



ACC-T69

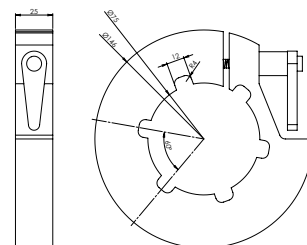
Coil stops are anchored to the body shaft using a latch and set the limit for positioning the coils. They can be for body shaft diameter of 69mm or any other custom measures



ACC-T75

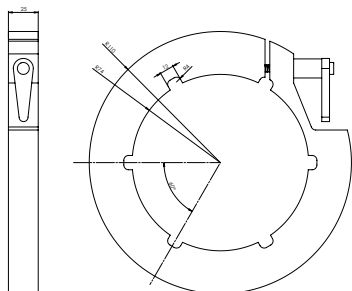
Coil stops are anchored to the body shaft using a latch and set the limit for positioning the coils. They can be for body shaft diameter of 75mm or any other custom measures

COIL STOPPER FOR AIRSHAFT Ø75



ACC-T15

COIL STOPPER FOR AIRSHAFT Ø148



Coil stops are anchored to the body shaft using a latch and set the limit for positioning the coils. They can be for body shaft diameter of 150mm or any other custom measures



info@ejematic.com



www.ejematic.com